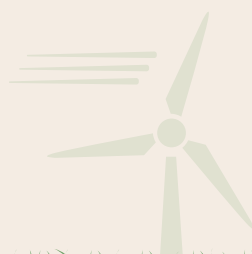
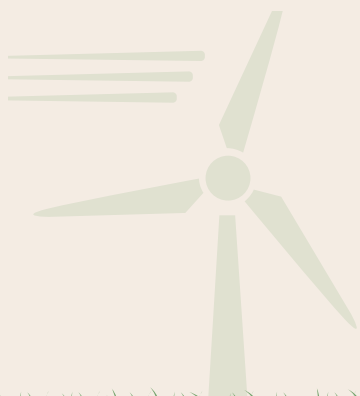


Elverdøl

Elverdøl A/S
Risbyvej 28
DK - 2765 Smørum

Tlf. (+45) 35 13 32 22
contact@elverdøl.com
www.elverdøl.com










Sustainability at the heart of our designs

We have been building active outdoor areas for many decades, and the transition to a more sustainable production is a high priority in our future strategy. We want a greener future, where we work wisely with solid and long-lasting materials and ambitious goals for the design and functions of the outdoor space. Our basic idea is that the playground represents a circular design.

Our play environments must represent what we as a company strive for. That is why Elverdal has formulated guidelines for the future transformation.

Elverdal is committed to protecting nature and the environment so that the development of society can take place on a sustainable basis with respect for human living conditions and for the preservation of animal and plant life.

In production and delivery, as well as with our suppliers, Elverdal will strive:

-  to prevent and combat pollution of air, water, soil and subsoil, vibration, and noise abatement;
-  to use hygienic processes of importance to the environment and to humans;
-  to limit the use and waste of raw materials and other resources;
-  to promote the use of cleaner technologies;
-  to reduce problems related to waste disposal.

Many international goals and strategies overlap, so our approach is holistic. We formulate our own goals, we take ownership, and we contribute where we are best.

Elverdal's sustainable transformation must include real initiatives with clear goals. We want to turn our attention to our own company and set new goals in business areas such as: Procurement of sustainable products; optimising production processes; minimising waste; purposing residual products, and optimising logistics.

This is where we put into words the areas in which we can make a difference, and how our efforts relate to the Sustainable Development Goals.

Read more here about how we work with the different Sustainable Development Goals so that Elverdal becomes a sustainable business. Elverdal assesses what is realistic to achieve when the best available techniques are used, including less polluting raw materials, processes and plants and the best possible anti-pollution measures.

Elverdal's environmental policy

- 1** Reduction of emissions in the choice of suppliers, solutions, materials, and processes
- 2** Recording and monitoring the effects of substances and materials used
- 3** Efficient processes, reduction of resource use, and minimising waste associated with the entire product life cycle:
 - a. Mining, logging, and reuse (raw material supply)
 - b. Transport to our manufacturing facilities
 - c. Project development
 - d. Manufacturing
 - e. Transport to construction site
 - f. Construction/installation
 - g. Use, maintenance, repair, replacement
 - h. End of life, waste processing and disposal, and/or
 - i. Reuse, recover, recycle
- 4** Responsible management of waste from production and civil engineering
- 5** Continuously monitor environmental legislation and implement new requirements
- 6** Certified according to DS/EN ISO 14001:2015, to ensure a minimal environmental impact and continuous improvement in the environmental field
- 7** Conducting Environmental Product Declaration according to EN 15804:2012+A2:2019/AC:2021, ISO 4025:2006, 3.2, ISO 14040:2006, and ISO 14044:2006





ur sustainable strategy is based on

The UN's 17 Sustainable Development Goals. They were adopted by all 193 UN member states in 2015. It was the starting point for working towards a socially, economically and environmentally sustainable development for the planet. By 2030, the vision is to completely eradicate poverty and hunger in the world, reduce inequalities, ensure good education and better health for all, decent jobs and more sustainable economic growth.

The Sustainable Development Goals set an ambitious course and are a broad and important agenda for the future world community and our planet. The Sustainable Development Goals represent a large number of values that we want to incorporate in our daily business operations, so that Elverdal's business becomes sustainable.

Read more about the [Sustainable Development Goals](#) here.

Here we describe how we work with those Sustainable Development Goals and in areas where we can make an actual difference.



Health and well-being

- Sustainable Development Goal 3

Elverdal's concept is based around the active life. Our playgrounds improve health and quality of life by developing users' motor, physical and social skills. Our outdoor spaces are intended as settings for future generations, which is why we have big visions for future designs!

Elverdal's outdoor environments are about more than just 'playing'. They are also about learning, developing skills, forming friendships, exploring, and reflecting, and equally about taking a breather, having a laugh and lots of movement!



Gender equality

- Sustainable Development Goal 5

Our play environments are created for people of all ages, and we take individual users and their needs into account in our designs.

Our environments bring people together, regardless of gender, race, ethnic origin, religion, belief, disability, age, and sexual orientation. In the playground, you are part of a community, whether you are playing actively or quietly, are many or few, need activity and movement or a break and peace for contemplation.



Quality education

- Sustainable Development Goal 4

A good playground is a free space for children, and also a learning space. The playground must provide opportunities for both motor development and pedagogical goals but must first and foremost spark curiosity and imagination and be a fun place to be. A place where time disappears.

The National Board of Health recommends at least one hour of exercise a day. That makes 'the outdoor classroom' a crucial factor in the development of children and young people.

Education is one of the most powerful catalysts for sustainable development, and movement and play strengthen creative thinking and the ability to concentrate.

If teaching is to be taken outside, we think in creative solutions, where, for example, Greek elements on surfaces, tables and tracks support outdoor lessons and make the body a tool for learning.



Decent jobs and economic growth

- Sustainable Development Goal 8

As part of our CSR policy, we use the UN's Global Compact principles to formulate our corporate strategy on corporate social responsibility, human rights, the environment, and anti-corruption. We believe that everyone has the right to a decent job. We employ people with different professional ballast and job situations. We find resources in people through job testing, internships, and flexible (reduced hours) jobs.

We have an inclusive approach and welcome all nationalities and faiths, which strengthens Elverdal's competitiveness and earnings. By embracing broadly and respecting internationally recognised CSR principles, we have achieved success and expansion, and Elverdal is today an international company.





Sustainable cities and communities

- Sustainable Development Goal 11

About half of the world's population now lives in cities. This makes contributing to sustainable urban planning a major task.

A task we achieve by including solutions that make cities safe to live in, rich in culture and by providing space for living and green areas.

The future also presents increasing climate challenges, so our planning must include intelligent solutions, new technology and durability.

At Elverdal, we build settings for the local community, the active life and the company of others, whether in the city, in schools, in parks or in your residential area. This is where people meet!

We work in the 'space between the houses', and with specialised employees we create the places where people can meet, play, rest and interact.



Responsible consumption and production

- Sustainable Development Goal 12

All our products must be quality tested, individual parts can be replaced, and Elverdal offers a spare parts guarantee - the most important guarantee of all. All of which provides a safe playground, but also an extended life of the products because defects are rectified immediately. Through our testing procedures, we minimise repairs, which results in less driving and less environmental impact.

When designing projects, our architects seek to reduce the construction load as much as possible by reusing land and usable elements that already exist on site.

We run a purely 'made-to-order' production, so we do not have a product warehouse. Any products left over due to a cancellation or changes in a project, are passed on to other projects.



Industry, innovation, and infrastructure

- Sustainable Development Goal 9

Right from the start of the projects, our architects work on drawing intelligently with the user's needs in mind and with optimised use of space and materials.

Our projects are based on responsible production using healthy, natural materials that have a long service life and where individual parts are easy to replace - both above and below ground.

Read more here about [our material consumption and our recycling policy](#).

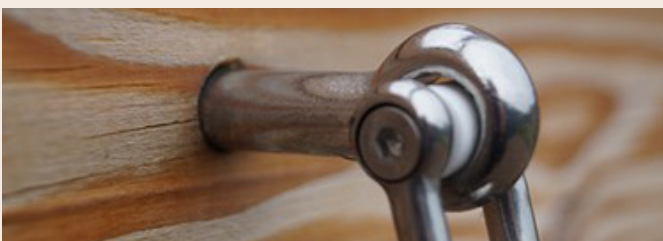


Climate action

- Sustainable Development Goal 13

We are an international company with branches in several Nordic countries, and we are experiencing an increasing demand for more environmentally friendly solutions throughout Europe.

Several of our materials are certified, which means we can contribute to reducing climate impact in the long-term. Going forward, we are working to take care of the resources we have and to use them wisely.





Life in the countryside

- Sustainable Development Goal 15

Our play environments are created as active, common areas between houses and in parks, and this is the perfect opportunity to integrate measures against climate change.

We also think about planting and making areas greener, so that biodiversity is increased. This helps to create play environments that are based on social responsibility, resilience and climate adaptation.



Partnerships for trading

- Sustainable Development Goal 17

In our projects, we use professional suppliers and partners who support us in becoming the best partner for the customer. With their expertise, we can optimise our project proposals and solve tasks with financial responsibility.

Going forward, we would like more sustainable initiatives to be incorporated into our cooperation agreements both in Denmark and abroad.

Global Compact and CSR

The work on the Sustainable Development Goals cannot stand alone and should also lean on the [Global Compact's 10 principles](#), which are the foundation for running a responsible business. The principles provide a common ethical and practical framework for corporate responsibility and are based on international conventions and agreements. For example, the OECD Guidelines, the ILO Conventions on Workers' Rights, the UN Guidelines on Human Rights and Business and the Rio Declaration are all represented in the principles.



The 10 principles of the Global Compact

CSR policy and our goals for a sustainable business

We live up to the social responsibility detailed in the conventions and which form the basis of the UN's 10 Global Compact principles. These concern human rights, labour rights, the environment, and anti-corruption.

HUMAN RIGHTS

Principle 1. Businesses should support and respect the protection of internationally proclaimed human rights; and

Principle 2. make sure that they are not complicit in human rights abuses.

LABOUR

Principle 3. Businesses should uphold the freedom of association and the effective recognition of the right to collective bargaining;

Principle 4. the elimination of all forms of forced and compulsory labour;

Principle 5. the effective abolition of child labour; and

Principle 6. the elimination of discrimination in respect of employment and occupation.

ANTI-CORRUPTION

Principle 10. Businesses should work against corruption in all its forms, including extortion and bribery.

ENVIRONMENT

Principle 7. Businesses should support a precautionary approach to environmental challenges;

Principle 8. undertake initiatives to promote greater environmental responsibility; and

Principle 9. encourage the development and diffusion of environmentally friendly technologies.

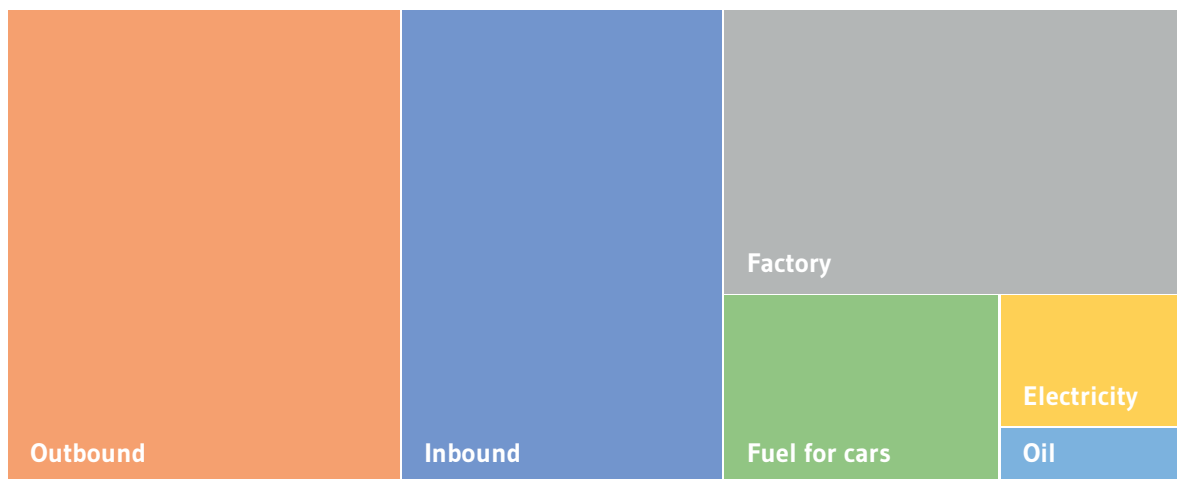


Environmental target assessment

Emissions represented by cost, in thousands DKK

Transport:	Inbound 770, Outbound 940, Factory 660, Total 2.370
Electricity:	120
Oil:	50
Fuel for cars:	265

Emission



Decision

Out of the transport cost, it is estimated that half the use of the cost is for fossil fuels, which is why it is the most interesting area to optimise. Out of the 3 transport areas, the outgoing transport is chosen as the measuring point as this is directly related to the quality of the outgoing goods, and is also the largest amount.

KPI	Target	Frequency
Environmental objective	Reduce the number of outbound transports	Semi-annual

